

PROJECT 10073 RECORD

1. DATE - TIME GROUP 16-17 Jun 67 18/0345Z	2. LOCATION Chicago, Illinois 1
3. SOURCE Civilian	10. CONCLUSION Probable (AIRCRAFT/with advertising sign) ?
4. NUMBER OF OBJECTS 1	
5. LENGTH OF OBSERVATION unknown	11. BRIEF SUMMARY AND ANALYSIS SEE CASE FILE
6. TYPE OF OBSERVATION Ground Visual	
7. COURSE S-N	
8. PHOTOS <input type="checkbox"/> Yes <input checked="" type="checkbox"/> No	
9. PHYSICAL EVIDENCE <input type="checkbox"/> Yes <input checked="" type="checkbox"/> No	

FORM

FTD SEP 63 0-329 (TDE) Previous editions of this form may be used.

16-17 June 67

TDET/UFO (Maj Quintanilla/70961/mhs/25 Sep 67)

UFO Observation, 16 or 17 June 1967

SEP 27 1967

~~████████████████████~~ Company
Pal-Waukee Airport
Wheeling, Illinois 60090

The Aerial Phenomena Branch is investigating an unidentified flying object sighting over Chicago, Illinois. The witness described the object as convex on the top and bottom with squared off ends and glowing like a neon sign. The sighting occurred at approximately 10:45 pm on either 16 or 17 June. Information on whether any of your planes were flying in the Chicago area on either of these dates, or if some other advertising planes that you know of, were in the area at the time would be helpful in our investigation. The inclosed self-addressed envelope is for your convenience in replying.

J JAMES C. MANATT, Colonel, USAF
Director of Technology and Subsystems

1 Atch
Envelope

NOT established —
JH

TDETUFO OFFICIAL FILE CY

*Real Aircraft with advertising
sign.*

16-17 June 67

Chicago, Illinois
August 22, 1967

Commanding Officer
Aerospace Technical Intelligence Center
Wright-Paterson Air Force Base
Dayton, Ohio

My Dear Sir:

Perhaps you have already received letters about this, but I had not been aware that there was any agency actively gathering data on this phenomenon, until I mentioned it to some friends and they suggested I write you.

On approximately June 16th or 17th, I was walking my dog at about 10:45 PM going east on my street. There was a search light beam playing in the sky to the east-southeast, the type used in promotional deals and opening nights. I watched it as I walked to the corner of Kildare Avenue, and at that point I noticed another light (or lighted object of odd shape) traveling from south to north. I looked at it because of its odd shape, but became really interested when it reached a point to the north, and then without stopping or changing shape or color in any way, reversed and traveled back south along the same horizontal line. Its speed was moderate to slow.

I watched it closely then, and as it came to a point near the beam from the searchlight it again "reversed" in the same manner and traveled back north to the same point. The total distance between the north-south points that it traveled would be about 5-6 city blocks from my ground point of view. By this time I had reached the corner of Kildare and Palmer Avenues, and leaned on the mailbox, fascinated at this unusual maneuver. I am sorry I did not count the number of "reversals", but at the mailbox alone I watched it for at least a minute. At no time did it come into the range of the searchlight beam.

Then suddenly the searchlight beam was adjusted so that its arc swept more to the east-northeast. At this point the object traveling south, shortened its southern point, as if to avoid the beam but traveled back to the northern point, came back south and again shortened this time more than the previous time. But this last time it traveled north only a very short distance, made a sudden right angle turn east toward the lake, and then "disappeared" as if the glow had been put out. Its size or shape did not diminish or change.

It was shaped, as near as I can describe it, like the side view of an aspirin tablet- that is, the top and bottom were equally slightly convex. Both ends were squared-off. Its color was a uniform orange-red glow, not a light, but more like a neon sign in the distance. At no time did the light or shape change- it did not

Send 164

Commanding Officer
ATIC

August 22, 1967

seem to make a turn when it made its reverses back and forth at the same speed, as if playing tag between two points.

I could not estimate the height, but it was well below the cloud ceiling, since the searchlight beam picked up the clouds which were thin and broken up evenly (buttermilk type). It was about 35° on the horizon, and $2\frac{1}{2}$ to 3 times as long as wide at its center. The length I would estimate to be the length of the fuselage of the propeller type passenger aircraft. It was definitely not an airplane, since it was plainly visible to me. Aircraft at this point travel much higher since we are at some distance from both airports, and at the time of this peculiar sight, I noticed a few planes which passed high overhead on their way to O'Hare.

I apologize for the delay; I had this handwritten in preparation for typing, when I met with an accident (bicycle-car) and was hospitalized for several weeks. I found the phenomenon most interesting, I am just sorry I was not scientific about counting and timing its maneuvers.

Respectfully,

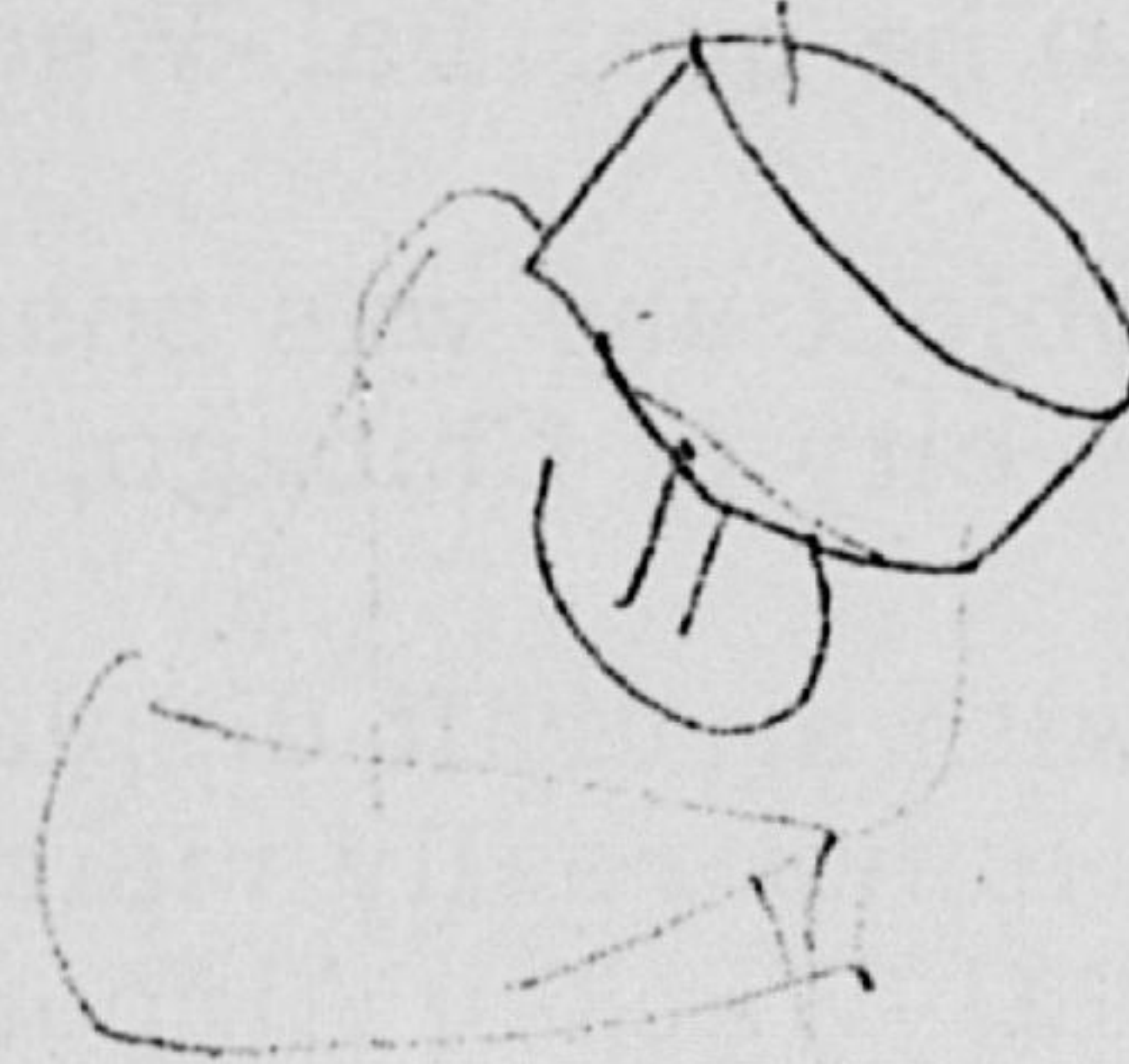
[REDACTED]
[REDACTED]
[REDACTED]
[REDACTED] are Avenue
[REDACTED]

DISAPPEARED
LIGHT WENT OUT

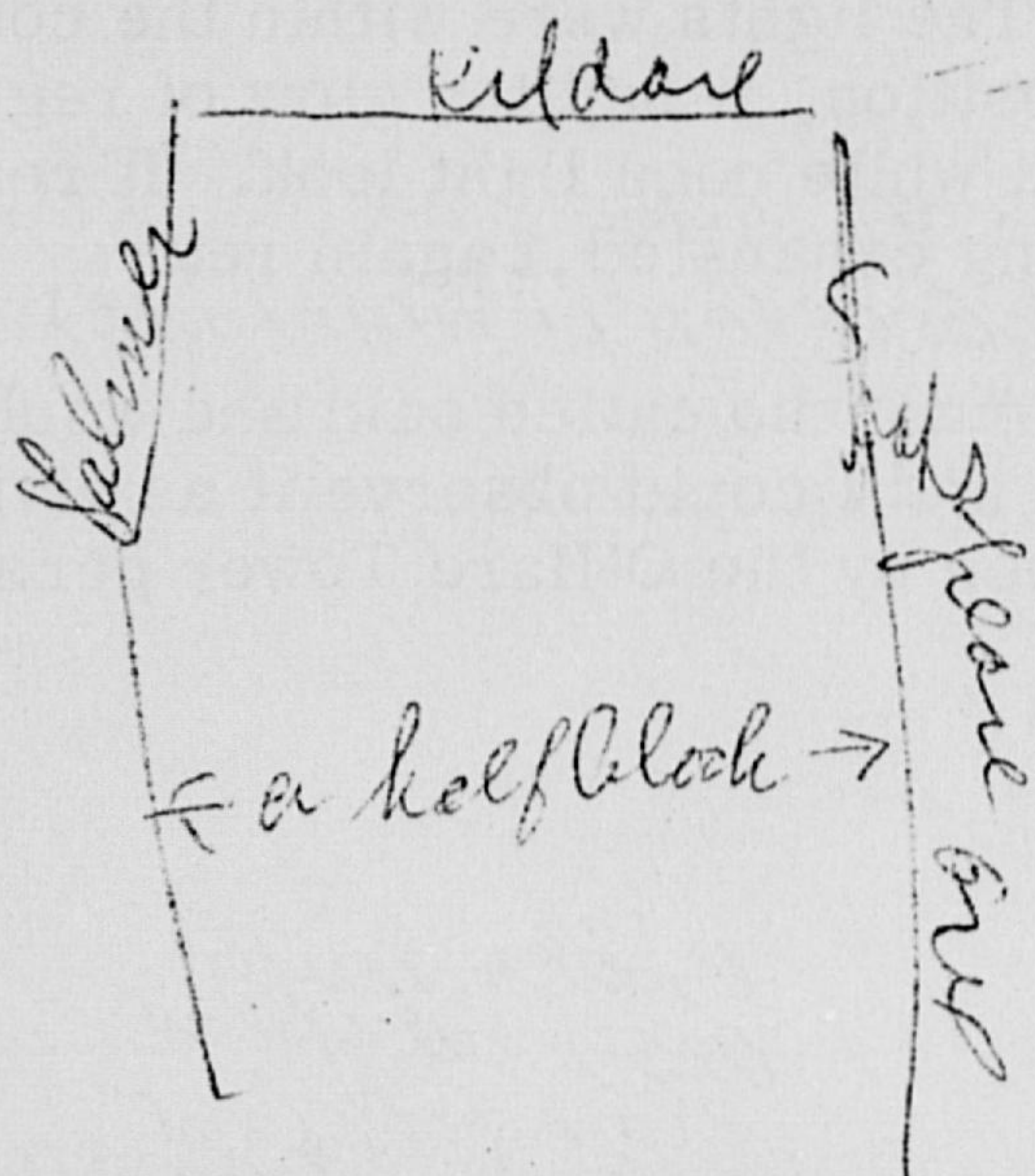
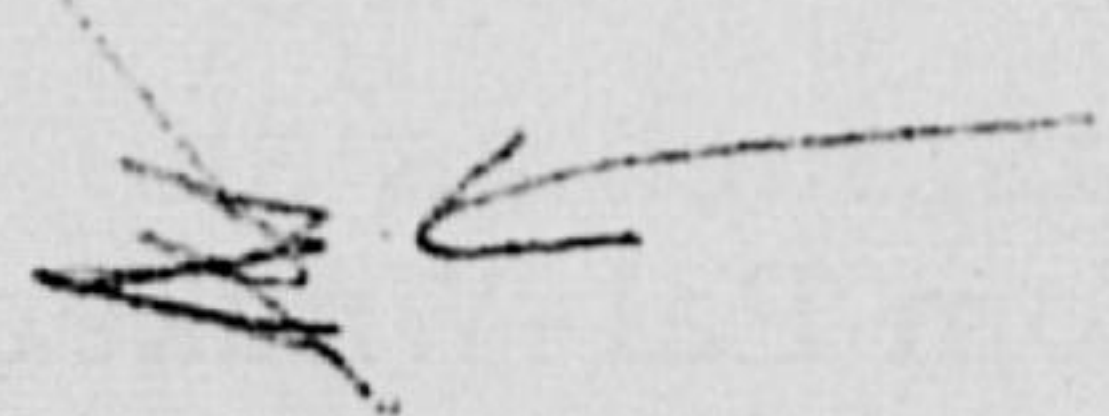
MAY HAVE BEEN
LONGER

ADJUSTED ARC
OF BEAM

ORIGINAL
OF BEAM



I judged
the searchlight
to be located about
6 blocks east & about
5 blocks south of S-
me



F. Z.

P.O. Box [REDACTED]
Wheeling, Illinois
October 7, 1967

Colonel James C. Manatt, USAF
Director of Technology and Subsystems
Department of the Air Force
Headquarters Foreign Technology Division (AFSC)
Wright-Patterson Air Force Base, Ohio 45433

Dear Sir:

This letter is in regard to your letter of September 27, 1967 to [REDACTED]
[REDACTED] Airport regarding an unidentified flying object sighting
over Chicago, Illinois.

I am employed by Mr. [REDACTED] and take all incoming telephone
calls for the Pal-Waukee Airport during the hours 11:00 P.M. to 6:00 A.M.
About 1:00 A.M. - 1:30 A.M. one morning this past summer (I don't recall
the date), I received a telephone call from a woman in the Lake Zurich,
Illinois area. She said that she and her friend had completed their working
shift at 11:00 P.M. They observed this lighted object in the sky to the southeast.
She said it had to be over Pal-Waukee or Chicago and asked if we could see it.

I could see the object she was speaking of and told her it looked like it was
directly over the city of Chicago.

I am familiar with aircraft displaying landing lights. The lights are pronounced
and the aircraft is not really visible. From the second floor of the Administration
Building at the Pal-Waukee Airport, the object looked like it was between
3,000 to 5,000 feet directly over the Chicago Loop or to an area one or two miles
inland. It had an outline about one and one half times as large as if looking at
an aircraft with lights on. The lights were within the confines of this outline
with no glare. From my position, it had the glow of regular light bulb, a warm
reddish yellow rather than a white neon light look. It remained in the same position
for 15 to 30 minutes, ^{AND WAS STILL THERE} and being exhausted, I again retired.
(AND KNOWING SHE HAD OBSERVED IT THAT LONG)

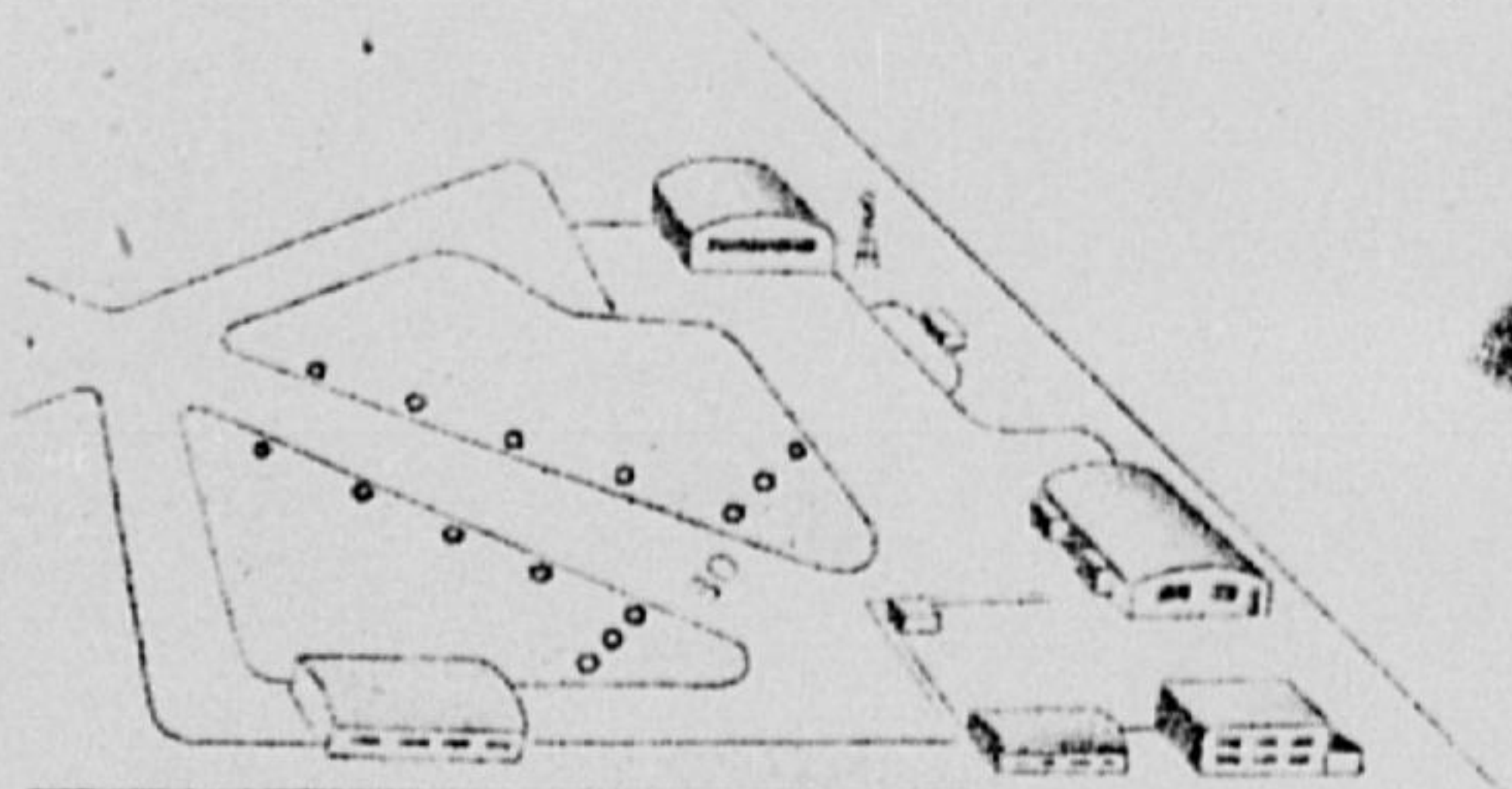
I did not report it as the woman who called said she would. Inasmuch as she
could see it from her area, and I could observe it as vividly from Pal-Waukee,
I was positive it could be seen by the O'Hare Tower personnel or some airline
pilot.

Size
was one end one half
times larger
than looking
at a plane
with lights
on at the
same spot

Compared to an outline this

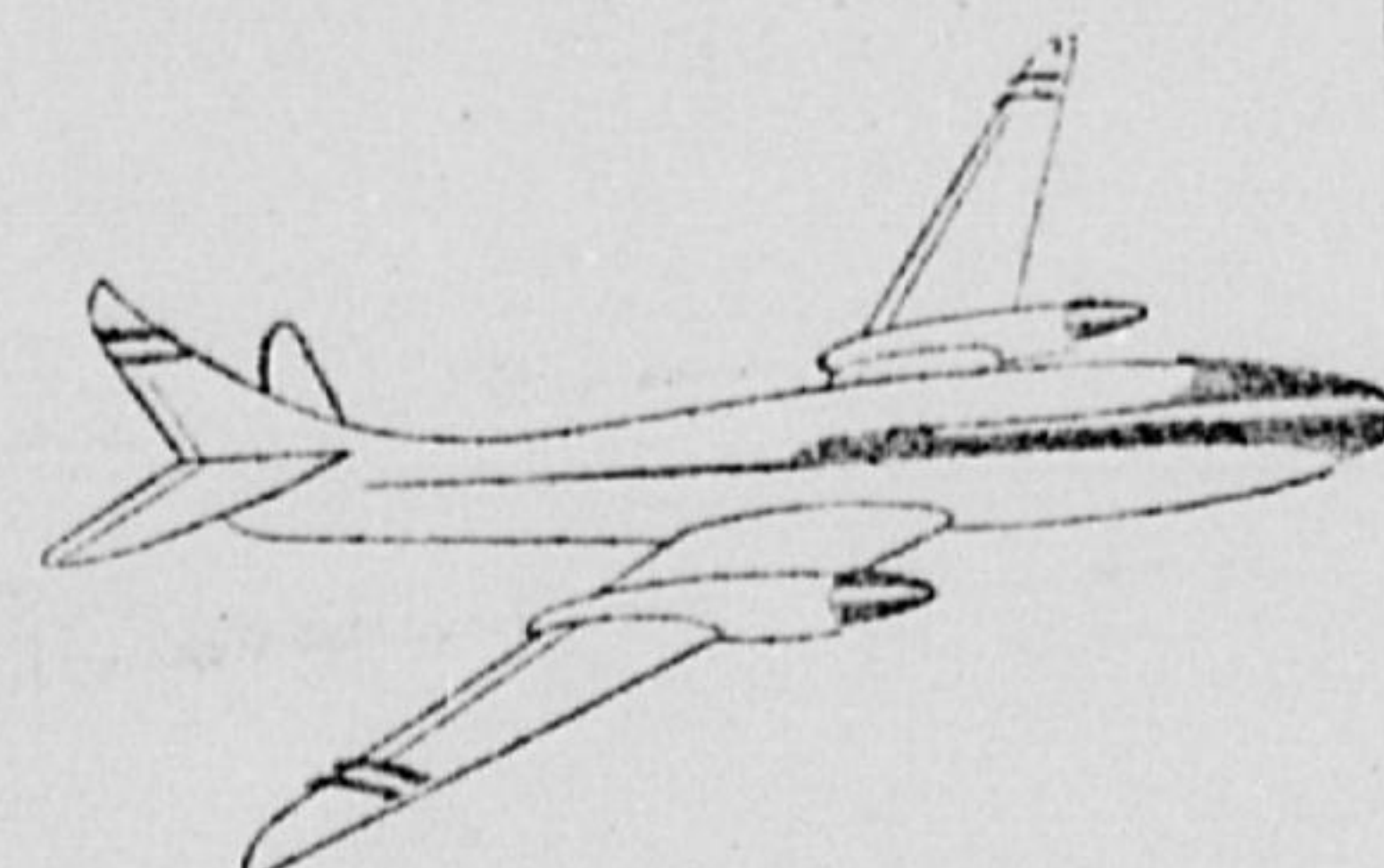
entire muted
area red-yellow
orange-glow
seemingly in
three sections





Aviation Service

PAL-WAUKEE AIRPORT
WHEELING, ILLINOIS 60090




October 7, 1967

Colonel James C. Manatt, USAF
Department of the Air Force
Headquarters Foreign Technology Division (AFSC)
Wright-Patterson Air Force Base, Ohio 45433

Dear Sir:

Please be advised that our Nite Lite Sign (which is mounted on a Cessna 172) was not in operation in June, 1967.

Very truly yours,

 SERVICE

GJP:een